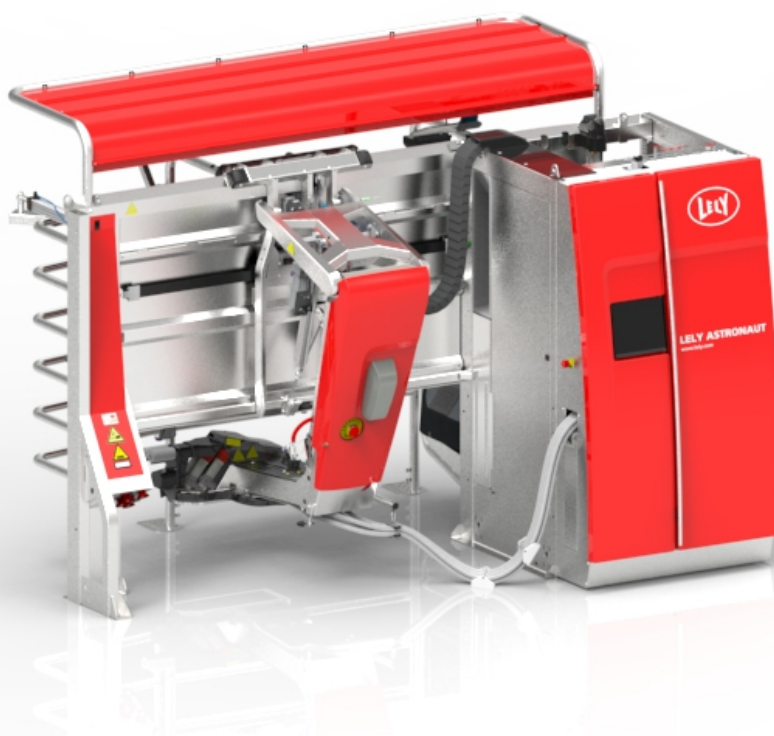


# Lely Astronaut

## MQC-C (type 3)



## Parts list

5.1005.8675.0 B

English Original





INTENTIONALLY BLANK

# Preface

## Applicability

Type number:	As from serial number:
5.1003.2480.0	
5.1003.2490.0	
5.1004.2640.0	
5.1004.7470.0	
5.1005.1188.0	
5.1005.3659.0	

## Spare Parts

When ordering spare parts it is important that you are aware of the type and serial number of your machine. Use only genuine LELY parts.

## Criticality

Criticality = Bulk, 0, 1, 2

- Bulk = Bulk item.
- 0 = Not critical.
- 1 = Not very critical.
- 2 = Critical.

## Explanation of Signs Used in the Parts List

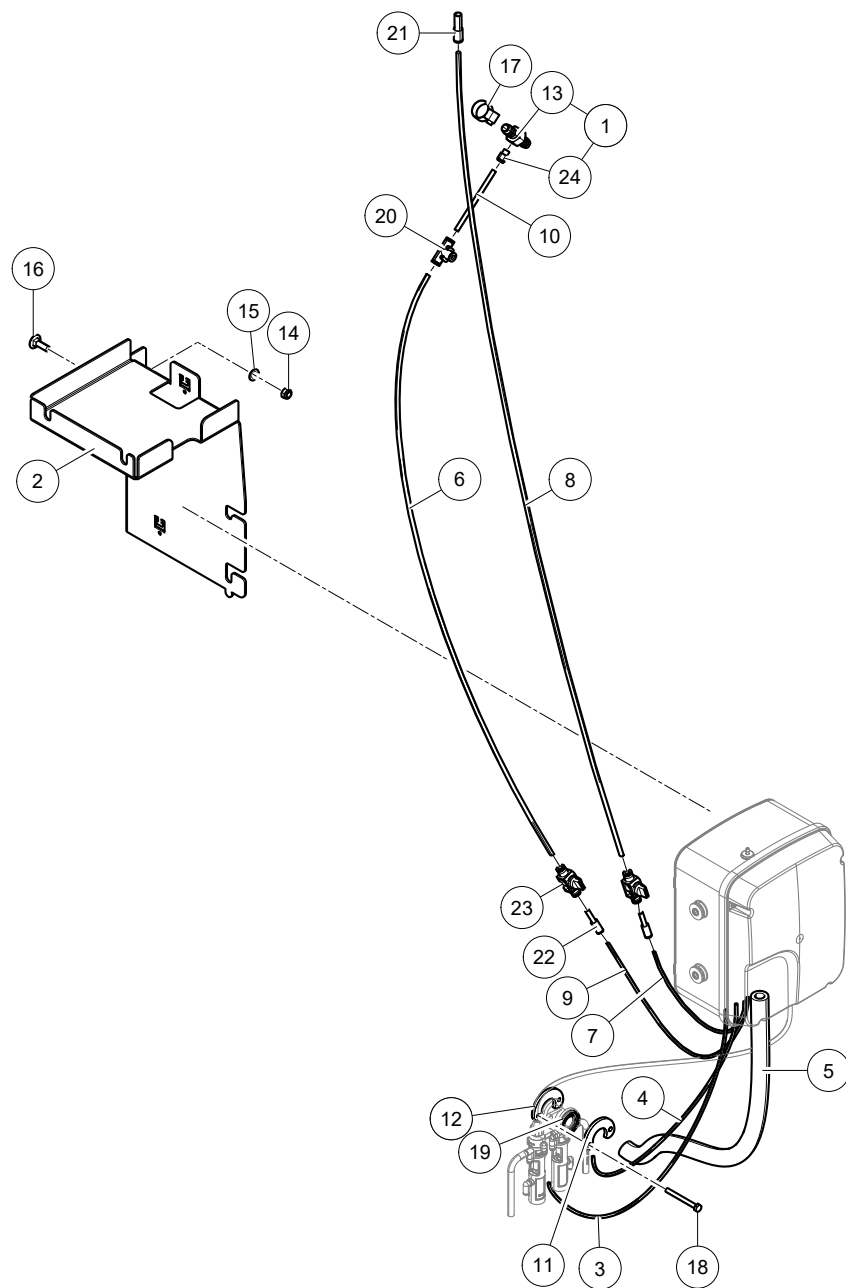
[R] / [RH]	By RH or LH version the position of the part is meant, seen from the rear of the machine.
[L] / [LH]	
[~]	E.g.: LH version is not similar to the RH version, which is actually shown.
[#]	Not available separately.



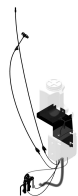
INTENTIONALLY BLANK

# Table of Contents

<b>A</b>	<b>MQC-C (optional)</b>	<b>6</b>
A-1	Installation Materials	6
A-2	Milk Line Valves Block	8
A-3	Milk Line Valves Block (USA)	10
A-4	Processor	12
A-5	Reagent Container	16
A-6	CAN-bus Cable (A4)	18
A-7	CAN-bus Cable (A5)	20
A-8	Valves Manifold	22
A-9	Reagent/Waste Valve (type 1)	24
A-10	Reagent/Waste Valve (type 2)	26
A-11	Test Cell	28
A-12	Peristaltic Pump	30
<b>B</b>	<b>MQC-C Rebuilt Kit</b>	<b>32</b>
B-1	Rebuilt kit (A3)	32
B-2	Rebuilt kit (A3 next)	36



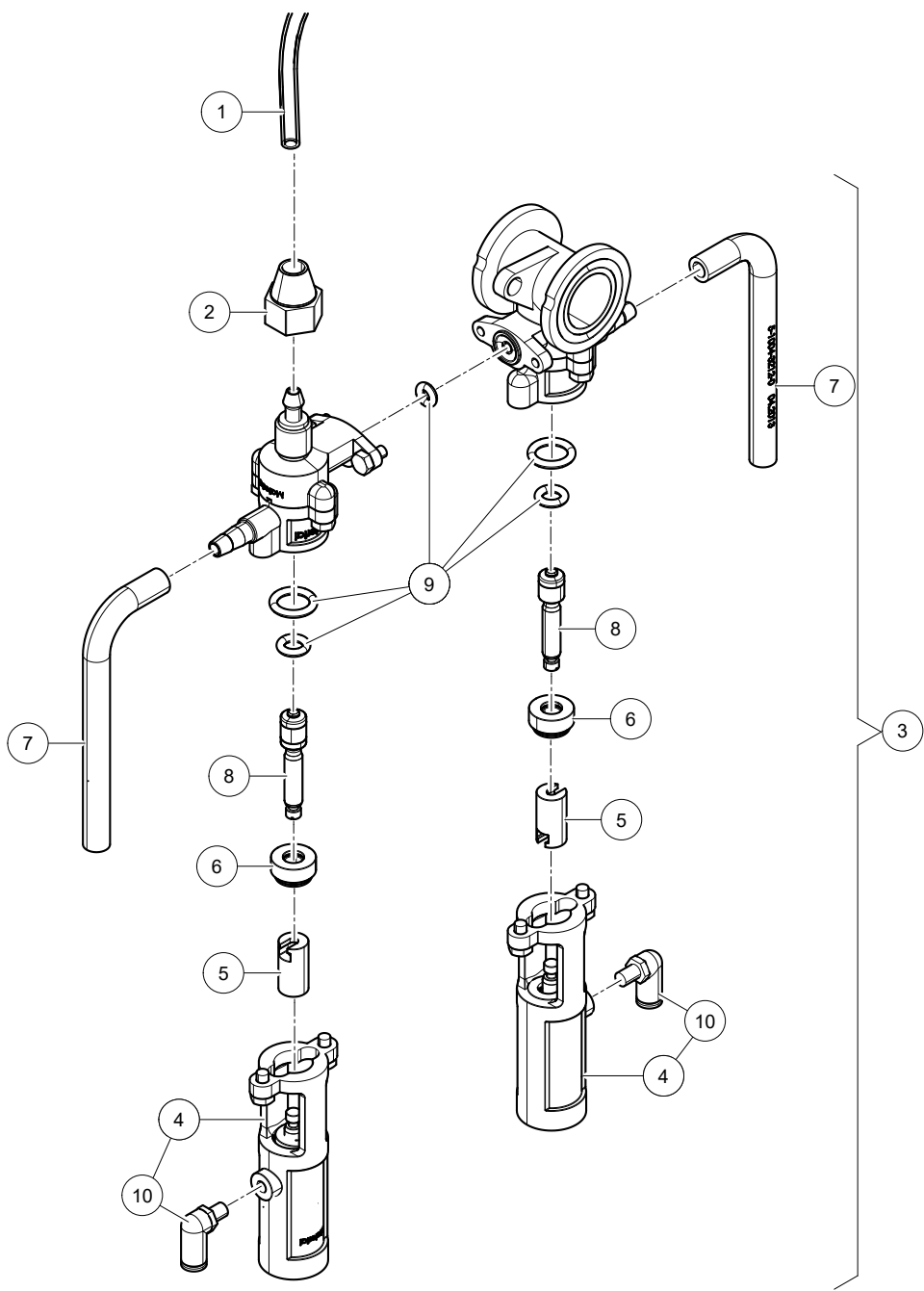
$$\textcircled{90} = \textcircled{11} + \textcircled{12} + \textcircled{18}$$



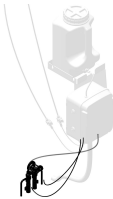
Lely Astronaut

MQC-C (type 3) 5.1004.2640.0  
 MQC-C (type 3) 5.1004.7470.0  
 MQC-C (type 3) 5.1005.1188.0  
 MQC-C (type 3) 5.1005.3659.0

Ref.	Part No	Qty.	Description	Techn. info	Criticality	Remark
1	5.1004.2475.0	1	T piece ass.			
2	5.1004.2722.0	[R] 1	Plate			
	5.1104.2722.0	[L] ~	Plate			
3	9.1138.0062.3	1	Tube			
4	9.1138.0075.2	1	Tube			
5	9.1185.0013.3	1	Hose			
6	9.1138.0064.5	1	Tube			
7	9.1138.0062.3	1	Tube			
8	9.1138.0064.5	1	Tube			
9	9.1138.0075.2	1	Tube			
10	9.1138.0064.5	1	Tube	6mm PUN-H BLUE L=0.100m		
11	#####	1	Not separately			
12	5.1004.3134.0	1	Clamp			
13	5.1004.6236.0	1	Coupling	13mm - 1/8" - 13mm		
14	9.1030.0020.4	1	Nut	M8 DIN985-A2-2 s/s		
15	9.1048.0050.2	1	Washer	A8.4 DIN125-A2 s/s		
16	9.1058.0053.2	1	Coach bolt	M8x25 DIN603 s/s		
17	9.1066.0020.3	2	Hose clamp	ø15-ø24 s/s		
18	9.1113.0354.2	2	Bolt	M6x60 DIN931-A2-2 s/s		
19	9.1130.0028.3	1	Tri clamp			
20	9.1138.0053.1	1	Plug-in coupling	6-6-6mm (T)		
21	9.1138.0166.2	1	Adapter ring	10-6mm		
22	9.1138.0179.1	2	Adapter coupling	4-6mm		
23	9.1138.0399.0	2	Valve			
24	9.1138.0923.0	1	Coupling straight	1/8"x6		
90	5.1004.3222.0	1	Connector			







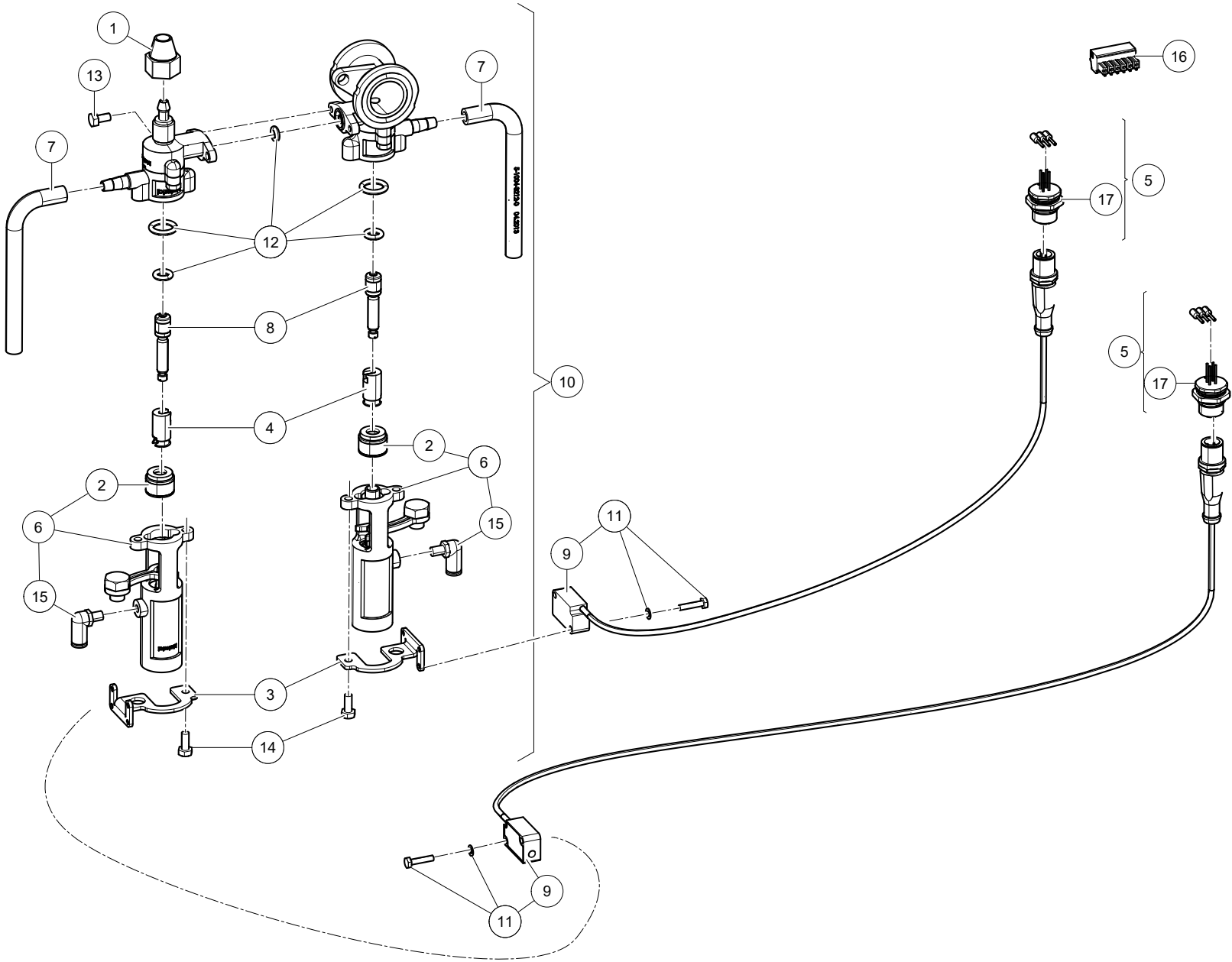
Lely Astronaut

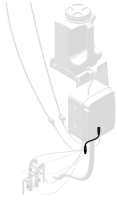
MQC-C (type 3)  
MQC-C (type 3)

5.1004.2640.0  
5.1005.1188.0

Ref.	Part No	Qty.	Description	Techn. info	Criticality	Remark
1	9.1065.0112.0	1	Hose	L=500		
2	5.1004.3099.0	1	Milk Outlet Fitting Nut			
3	5.1004.3200.0	1	Valve			
4	5.1004.3201.0	2	Valve			
5	5.1004.3204.0	2	Split Connection			
6	5.1004.3211.0	2	Gasket			
7	5.1004.3212.0	2	Tube			
8	5.1004.3216.0	2	Rod			
9	5.1004.6519.0	1	Kit	O-rings BBB MQC-C2		
10	9.1138.0037.6	2	Plug-in coupling	M5x4mm (└)		







Lely Astronaut

MQC-C (type 3)

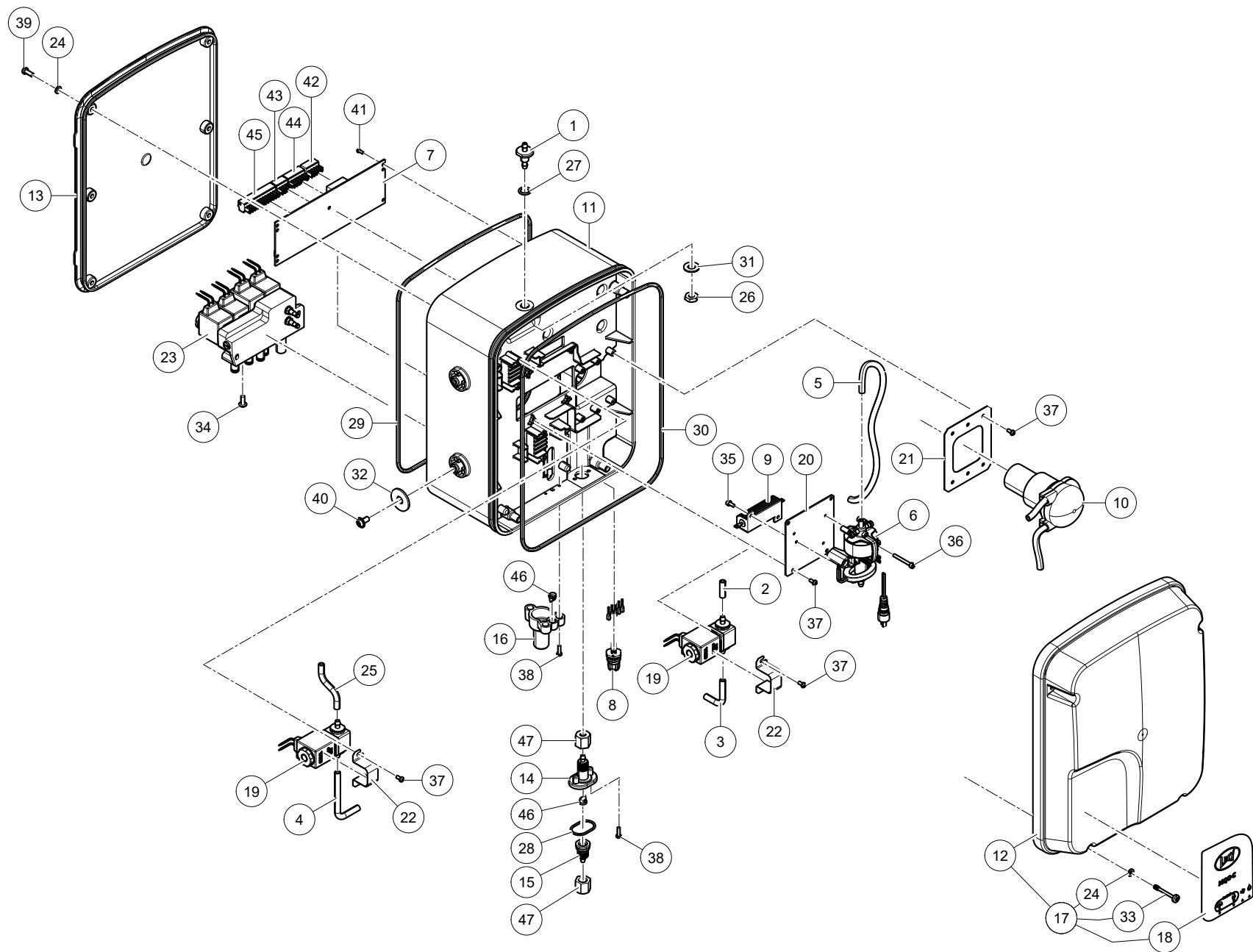
5.1004.7470.0

MQC-C (type 3)

5.1005.3659.0

Ref.	Part No	Qty.	Description	Techn. info	Criticality	Remark
1	5.1004.3099.0	1	Milk Outlet Fitting Nut			
2	#####	2	Not separately			
3	5.1004.3167.0	2	Bracket			
4	#####	2	Not separately			
5	5.1004.3177.0	2	Connector	CAN M12 female with ferrules		
6	5.1004.3201.0	2	Valve			
7	5.1004.3212.0	2	Tube			
8	5.1004.3216.0	2	Rod			
9	5.1004.3249.0	1	Sensor	including M12 connector		
10	5.1004.3254.0	1	Valve			
11	5.1004.3255.0	2	Kit spp valve guard sensor			
12	5.1004.6519.0	1	Kit	O-rings BBB MQC-C2		
13	#####	6	Not separately			
14	#####	4	Not separately			
15	9.1138.0037.6	2	Plug-in coupling	M5x4mm ( L )		
16	9.1186.0793.0	1	Connector			
17	9.1186.1100.0	1	Connector	SACC-DSI-M12FS-4CON-M16/0,5		

12



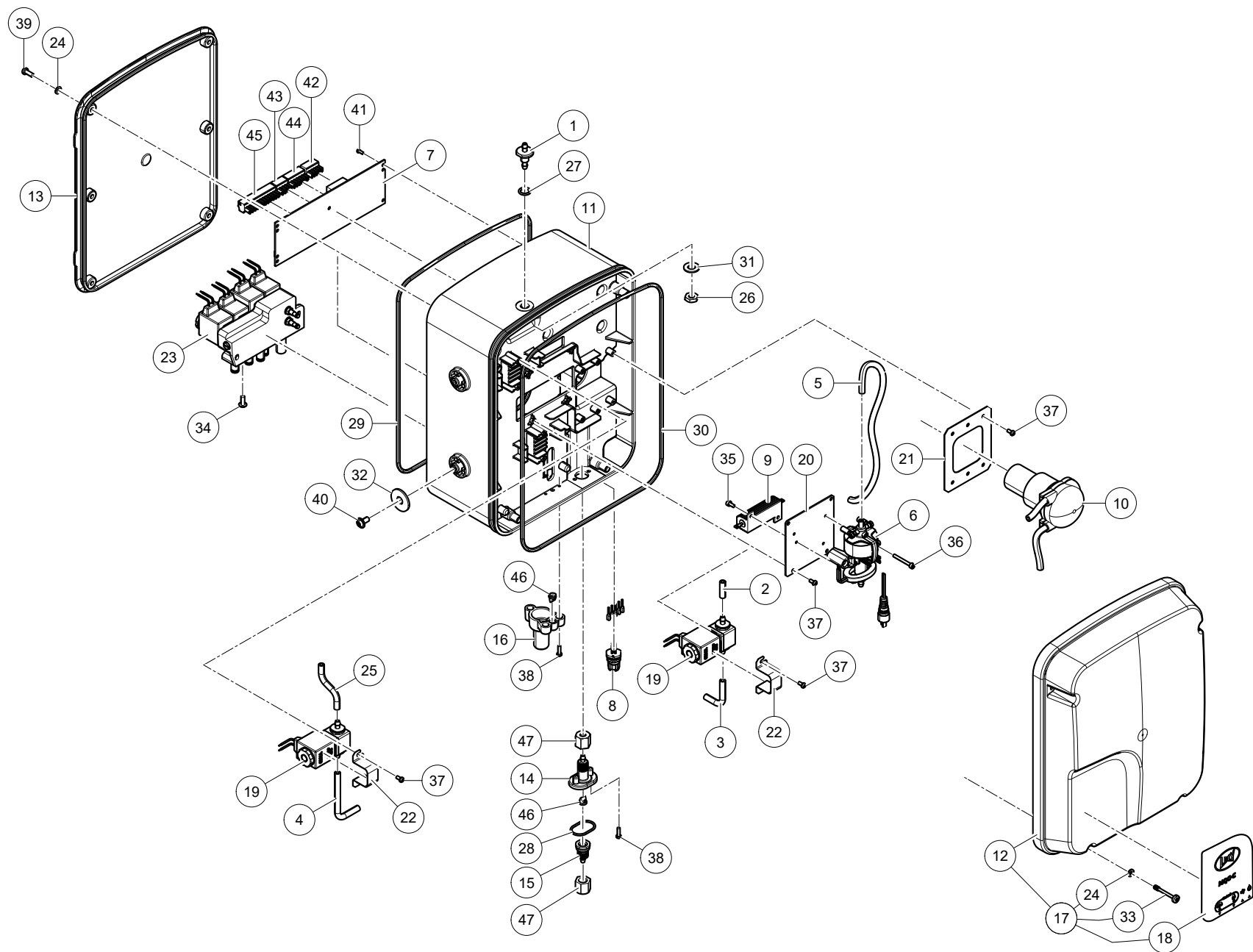


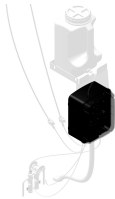
Lely Astronaut

MQC-C (type 3) 5.1004.2640.0  
 MQC-C (type 3) 5.1004.7470.0  
 MQC-C (type 3) 5.1005.1188.0  
 MQC-C (type 3) 5.1005.3659.0

Ref.	Part No	Qty.	Description	Techn. info	Criticality	Remark
1	#####	1	Not separately			
2	#####	1	Not separately			
3	#####	1	Not separately			
4	#####	1	Not separately			
5	#####	1	Not separately			
6	5.1004.2889.0	1	Cell			(see page 28)
7	5.1004.3169.0	1	PCB	GEV9020		
8	5.1004.3178.0	1	Connector	M12 Male and TWIN ferrules		
9	5.1004.5017.0	1	Heater			
10	5.1004.5018.0	1	Pump			(see page 30)
11	5.1005.4086.0	1	Box			
12	#####	1	Not separately			
13	5.1005.4088.0	1	Cover			
14	5.1005.4089.0	1	Fitting			
15	5.1005.4090.0	1	Nut			
16	5.1005.4091.0	1	Drain	PIPE		
17	5.1005.4092.0	1	Cover			
18	5.1005.4093.0	1	Decal			
19	#####	2	Not separately			(see page 24)
20	5.1005.4097.0	1	Bracket			
21	5.1005.4098.0	1	Plate			
22	5.1005.4100.0	2	Bracket			
23	5.1005.4103.0	1	Manifold			
24	5.1005.4106.0	10	Washer	7.9x3.8x1 PA6.6		
25	9.1065.0112.0	1	Hose			
26	9.1034.0011.5	1	Nut	M8x1.25 DIN439 s/s		
27	9.1043.0170.1	1	O-ring	9.0x2.0 NBR		
28	9.1043.0333.0	1	O-ring	21.95x1.78 NBR 70° SHORE		
29	9.1043.0356.0	1	O-ring			
30	9.1043.0357.0	1	O-ring			
31	9.1048.0050.2	1	Washer	A8.4 DIN125-A2 s/s		
32	9.1048.0052.4	4	Washer	A8.4 DIN9021-A2 s/s		
33	9.1057.0482.0	4	Screw			
34	9.1057.0501.0	2	Socket head screw			
35	9.1057.0600.0	2	Socket head screw			
36	9.1057.0601.0	2	Socket head screw			

CONTINUED



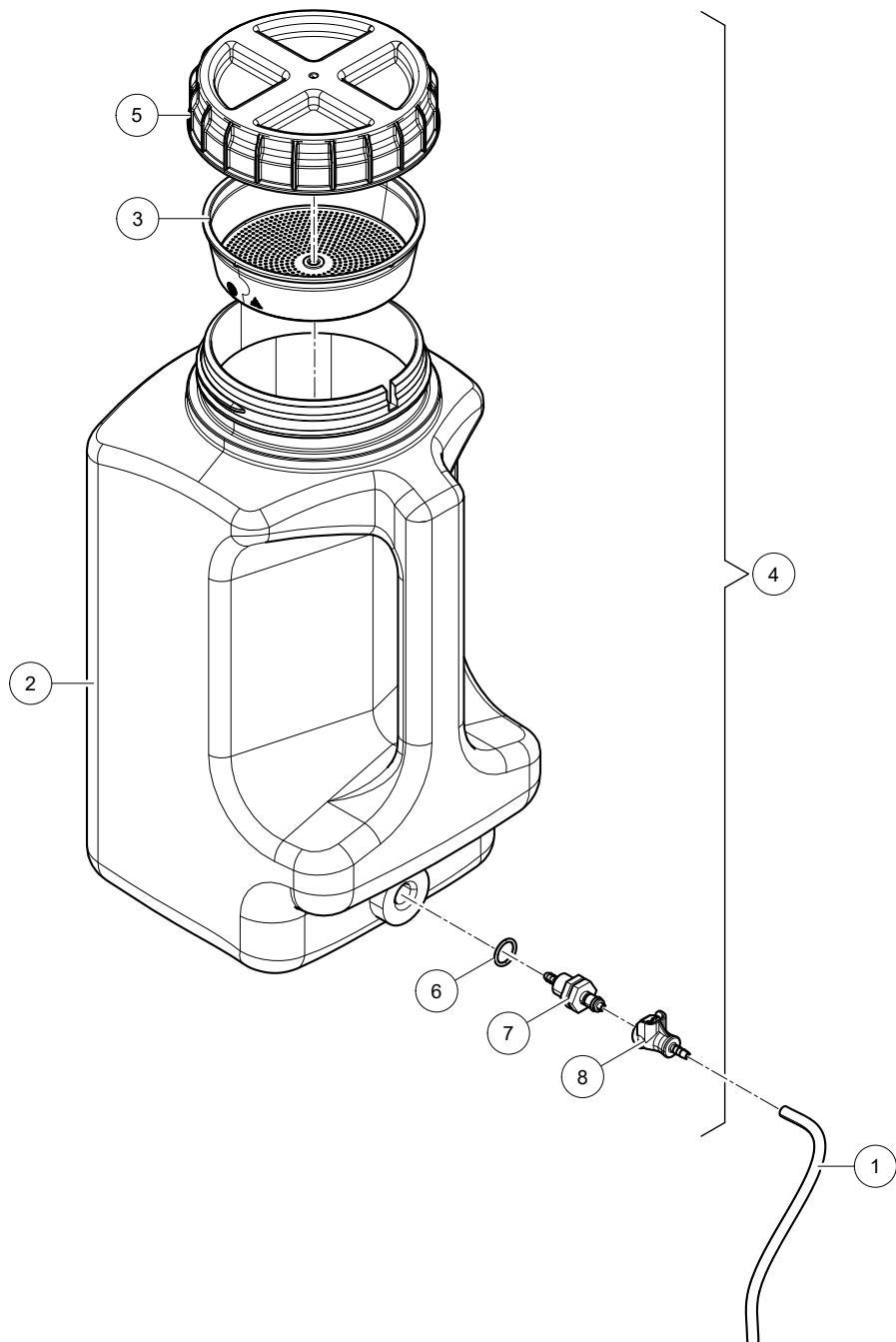


Lely Astronaut

MQC-C (type 3)	5.1004.2640.0
MQC-C (type 3)	5.1004.7470.0
MQC-C (type 3)	5.1005.1188.0
MQC-C (type 3)	5.1005.3659.0

Ref.	Part No	Qty.	Description	Techn. info	Criticality	Remark
37	9.1064.0200.0	14	Screw			
38	9.1064.0201.0	5	Screw			
39	9.1064.0203.0	8	Screw			
40	#####	4	Not separately			
41	9.1064.0207.0	5	Screw	WN5412, 2.5 x 6 S/S-A2, Philips		
42	9.1186.0679.0	1	Connector	MC 1.5/5-ST-3.81		
43	9.1186.0792.0	1	Connector			
44	9.1186.0793.0	1	Connector			
45	9.1186.0795.0	1	Connector			
46	9.1189.0215.0	2	Connector			
47	9.1189.0313.0	2	Nut			









Lely Astronaut

MQC-C (type 3)

MQC-C (type 3)

MQC-C (type 3)

MQC-C (type 3)

5.1004.2640.0

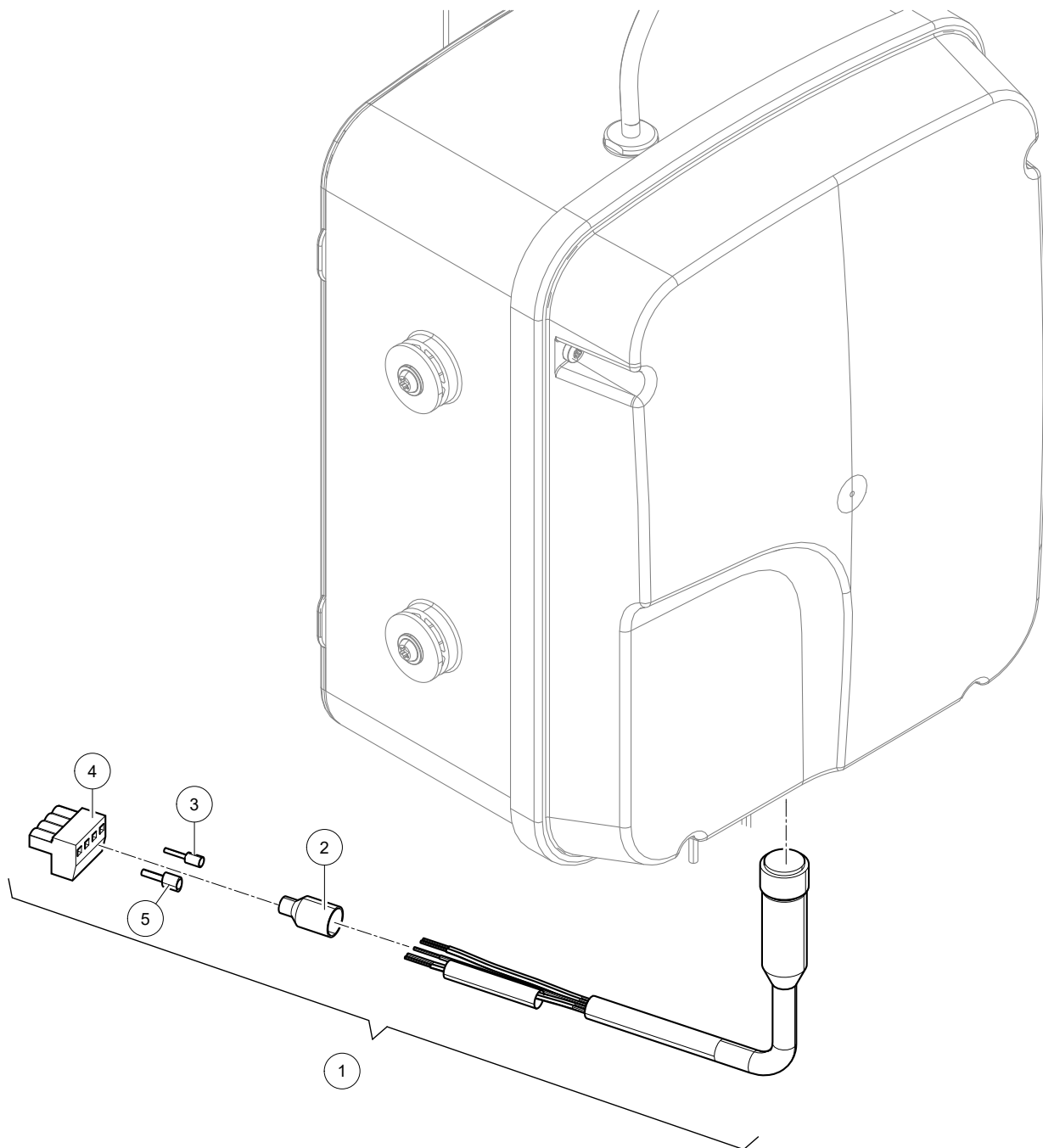
5.1004.7470.0

5.1005.1188.0

5.1005.3659.0

Ref.	Part No	Qty.	Description	Techn. info	Criticality	Remark
1	9.1065.0112.0	1	Hose			
2	#####	1	Not separately			
3	5.1004.2915.0	1	Filter			
4	5.1004.2916.0	1	Canister			
5	#####	1	Not separately			
6	9.1043.0202.0	1	O-ring	12.4x1.78		
7	9.1138.0279.2	1	Plug-in coupling			
8	9.1138.0964.0	1	Coupling			



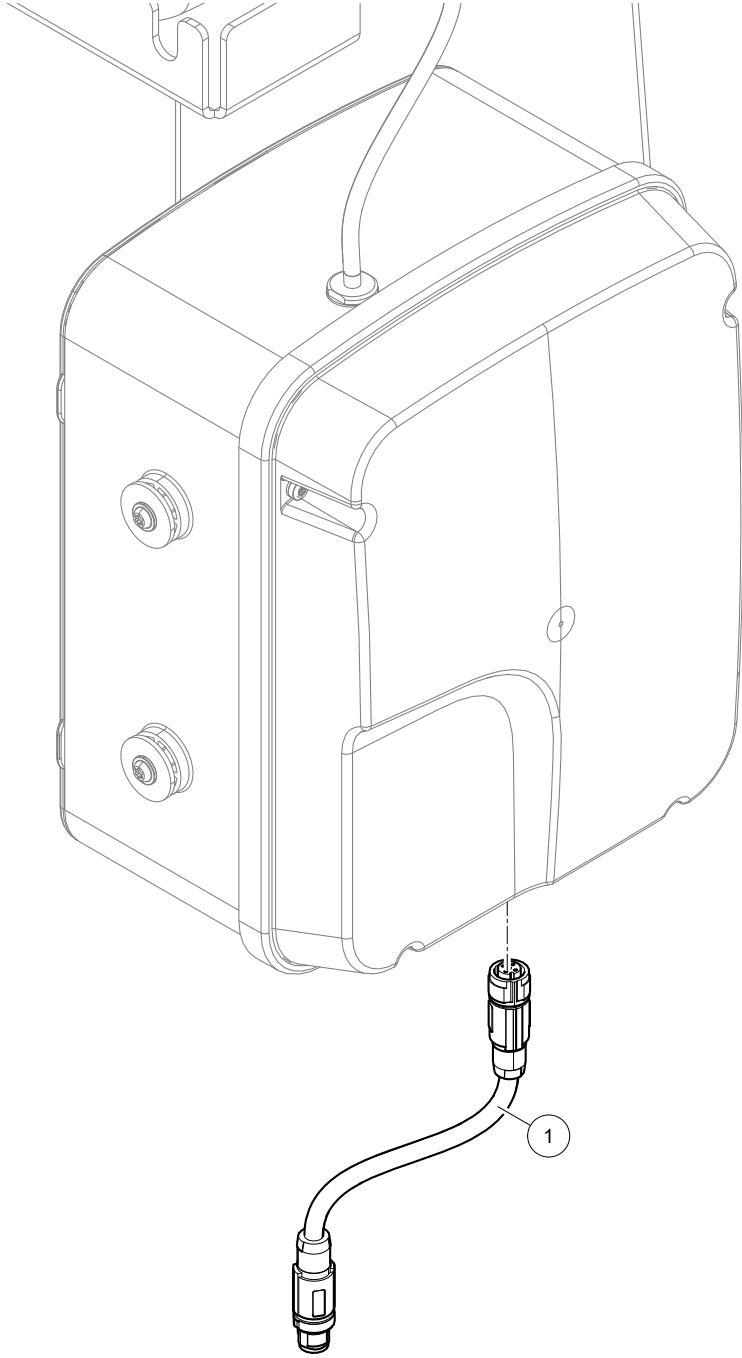




Lely Astronaut  
MQC-C (type 3) 5.1004.2640.0  
MQC-C (type 3) 5.1004.7470.0

Ref.	Part No	Qty.	Description	Techn. info	Criticality	Remark
1	5.1004.2971.0	1	Cable			
2	#####	1	Not separately			
3	9.1186.0018.0	3	Ferrule	4x0.75mm2 100m		
4	9.1186.0213.6	1	Connector	Phoenix (Female)		
5	9.1186.0467.1	1	Ferrule			





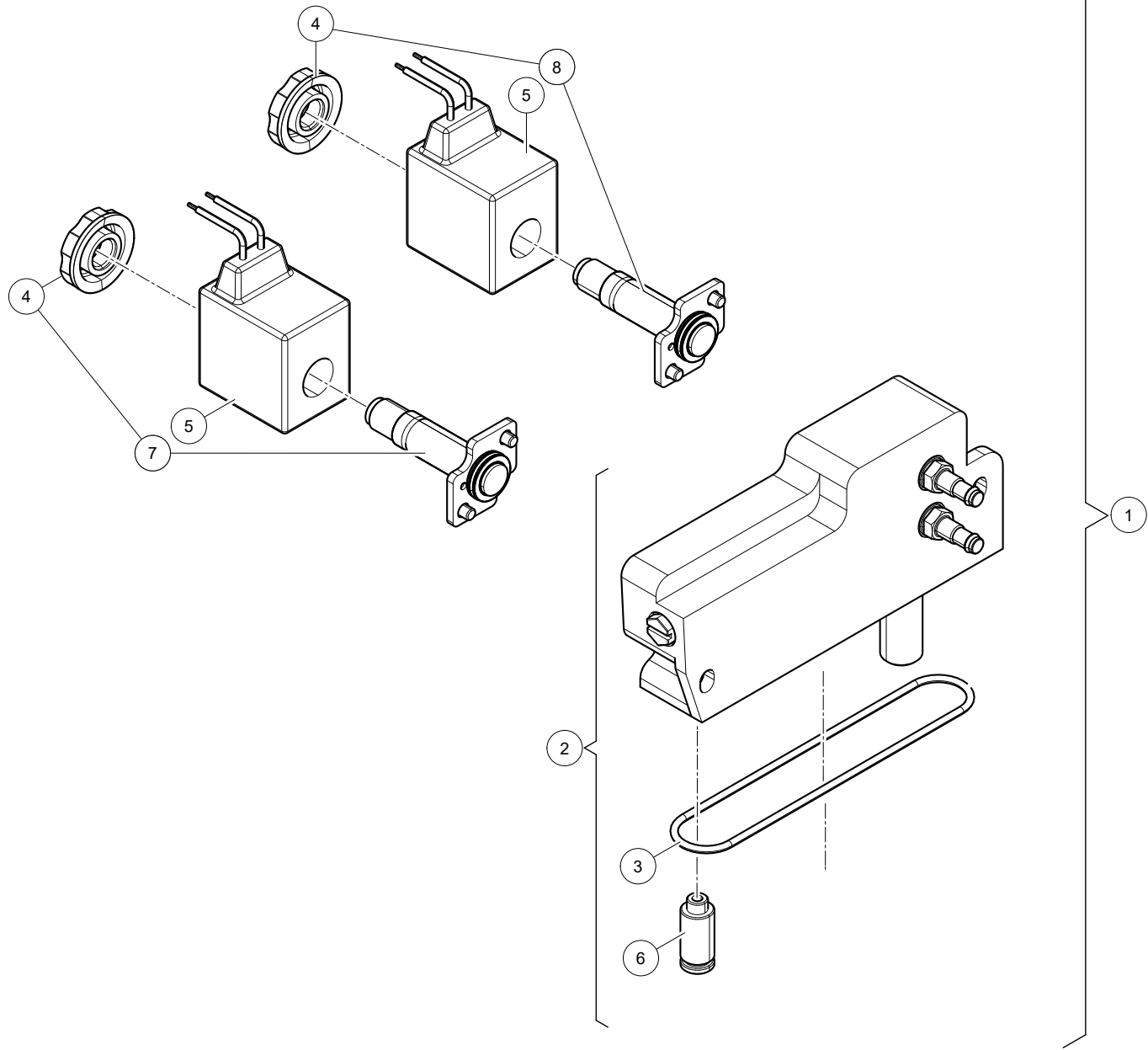


Lely Astronaut

MQC-C (type 3)	5.1005.1188.0
MQC-C (type 3)	5.1005.3659.0

Ref.	Part No	Qty.	Description	Techn. info	Criticality	Remark
1	6.2001.1017.0	1	Cable			







Lely Astronaut

MQC-C (type 3)

MQC-C (type 3)

MQC-C (type 3)

MQC-C (type 3)

5.1004.2640.0

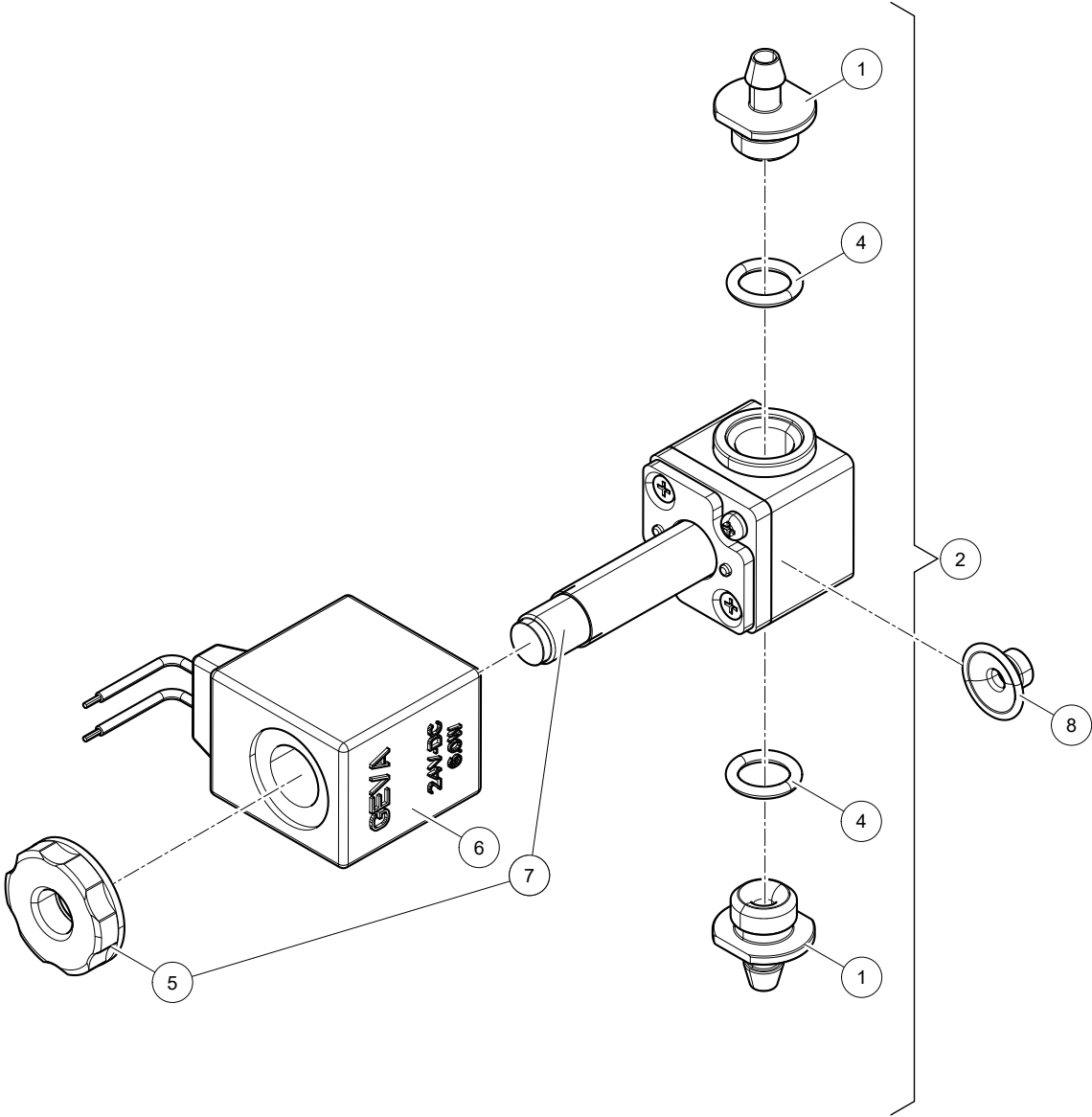
5.1004.7470.0

5.1005.1188.0

5.1005.3659.0

Ref.	Part No	Qty.	Description	Techn. info	Criticality	Remark
1	5.1005.4103.0	1	Manifold			
2	5.1005.4104.0	1	Manifold			
3	9.1043.0335.0	1	O-ring			
4	9.1138.0811.1	4	Castellated nut			
5	9.1138.0940.0	4	Coil	L=225		
6	9.1138.0074.1	4	Plug-in coupling	M5x4mm (   )		
7	9.1138.0972.0	2	Operator	3/2		
8	9.1138.0973.0	2	Operator	2/2		





$3 = 1 + 4 + 7$





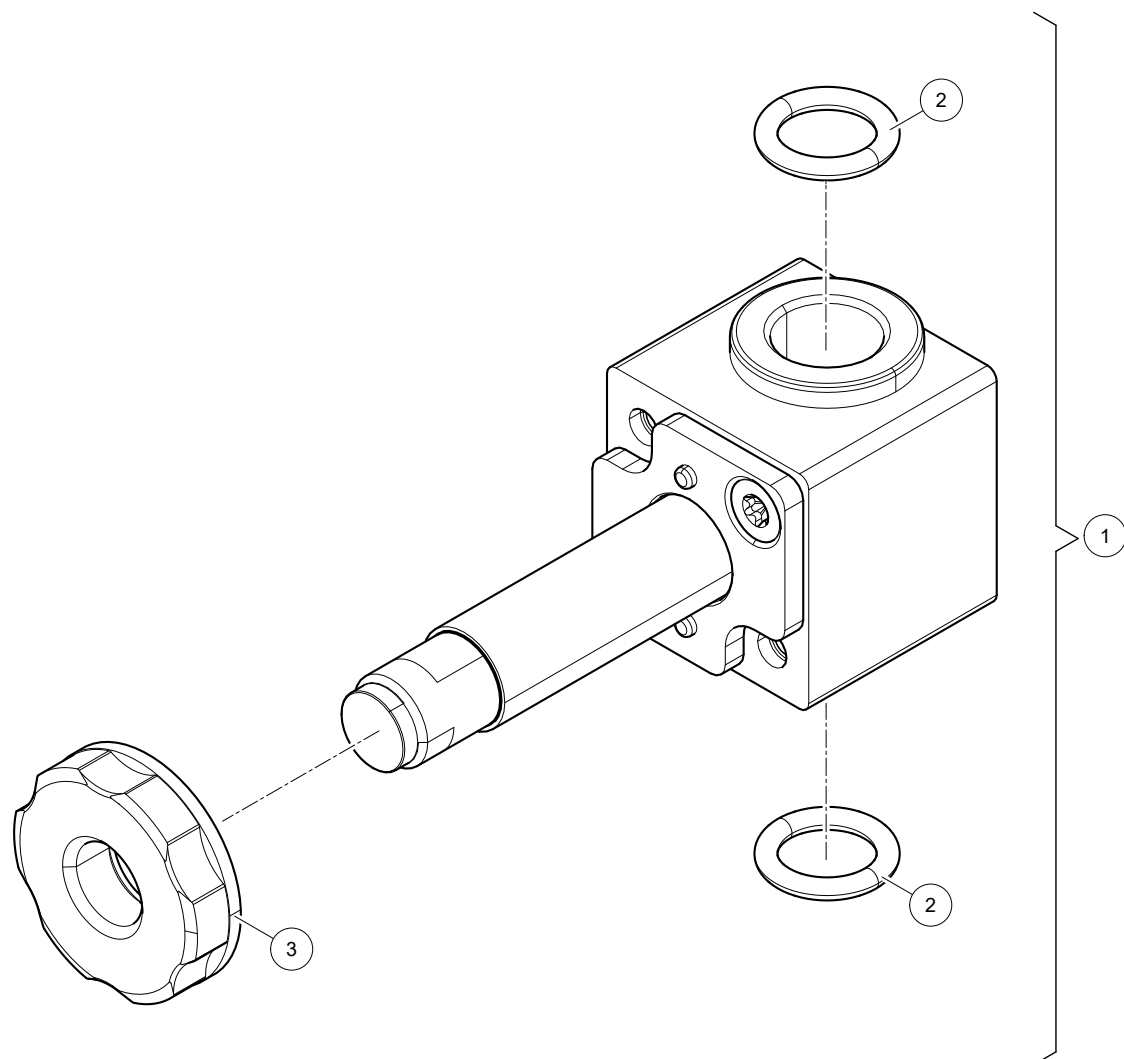


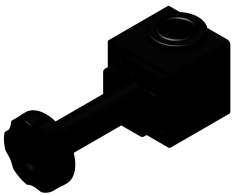
Lely Astronaut

MQC-C (type 3)	5.1004.2640.0
MQC-C (type 3)	5.1004.7470.0
MQC-C (type 3)	5.1005.1188.0
MQC-C (type 3)	5.1005.3659.0

Ref.	Part No	Qty.	Description	Techn. info	Criticality	Remark
1	5.1004.2617.0	2	Nipple			
2	5.1005.4095.0	1	Valve			
3	5.1005.4096.0	1	Valve			
4	9.1043.0136.2	2	O-ring	7.65x1.78 Viton		
5	9.1138.0811.1	1	Castellated nut			
6	9.1138.0940.0	1	Coil	L=225		
7	#####	1	Not separately			
8	9.1138.1325.0	1	Membrane			





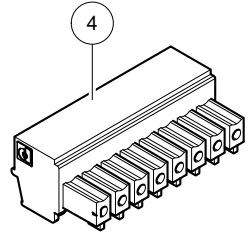
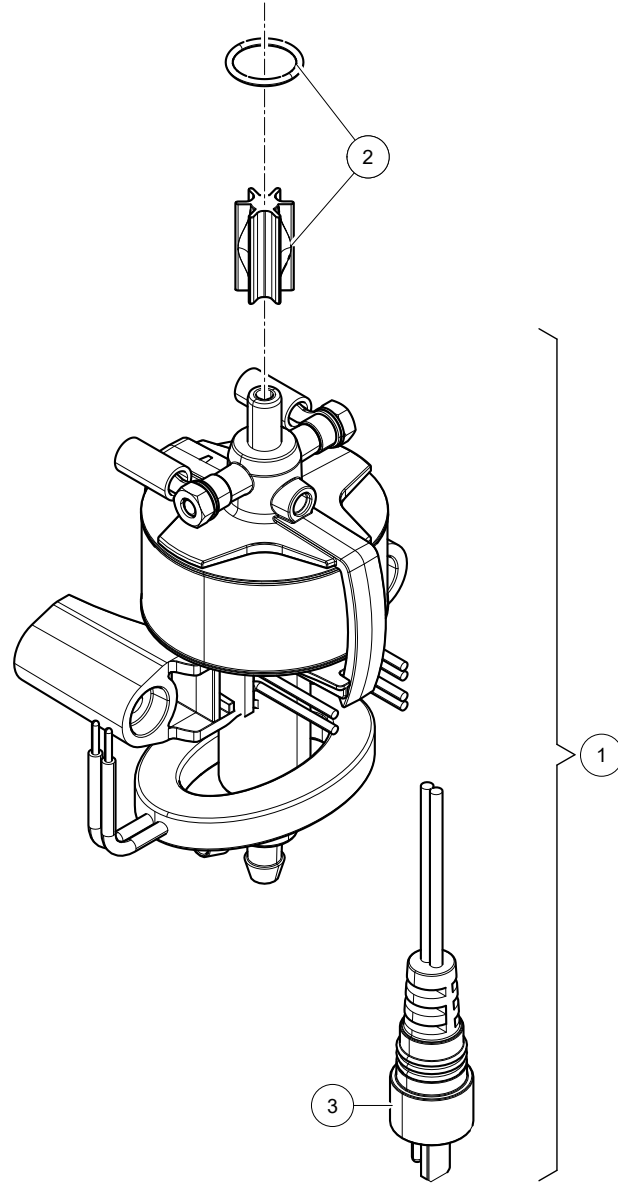


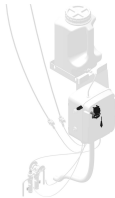
Lely Astronaut

- MQC-C (type 3) 5.1004.2640.0
- MQC-C (type 3) 5.1004.7470.0
- MQC-C (type 3) 5.1005.1188.0
- MQC-C (type 3) 5.1005.3659.0

Ref.	Part No	Qty.	Description	Techn. info	Criticality	Remark
1	5.1005.4124.0	1	Valve			
2	9.1043.0136.2	2	O-ring	7.65x1.78 Viton		
3	9.1138.0811.1	1	Castellated nut			
4	9.1138.1354.0	1	Plunger	Replacement med.sep.valve Viton		





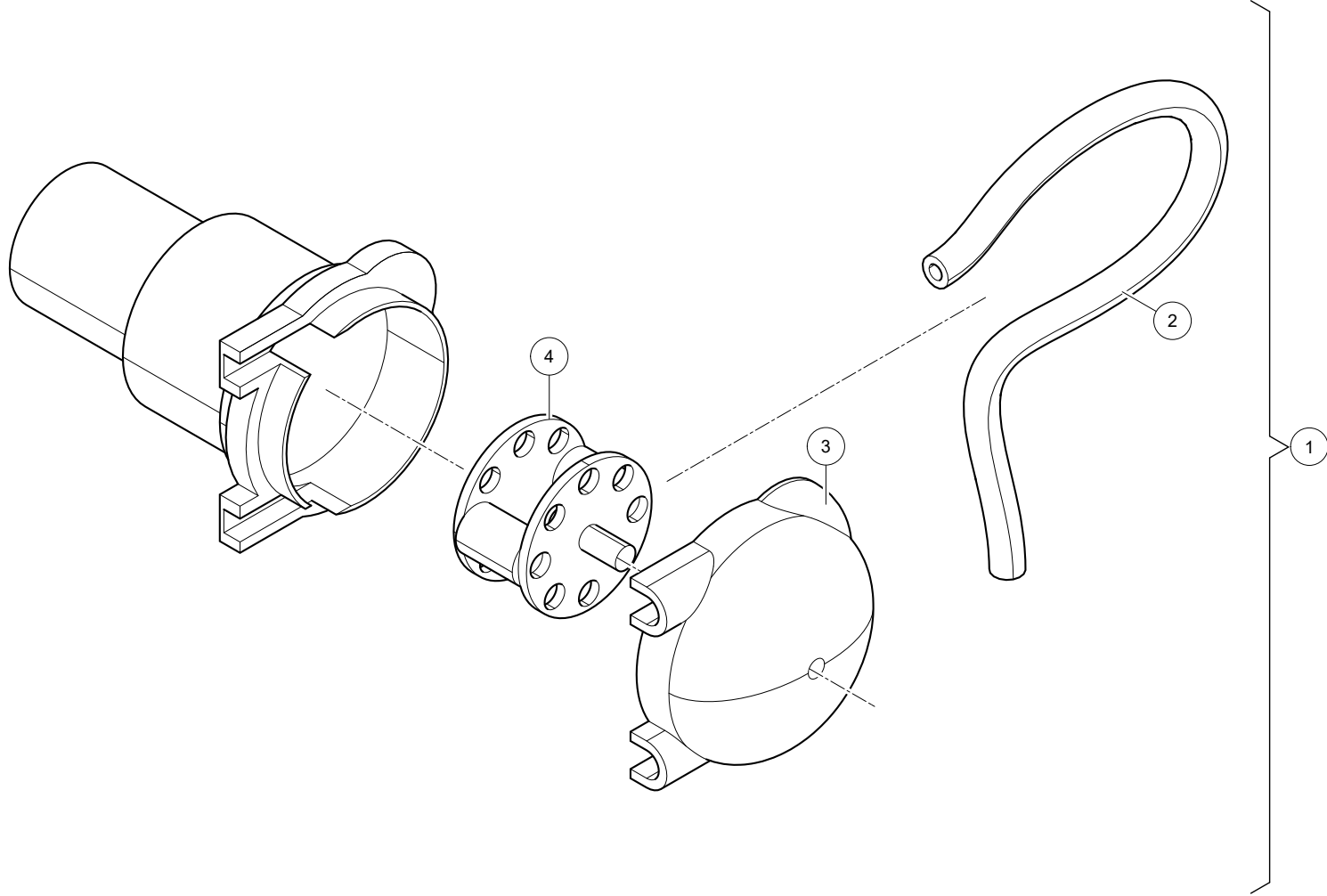


Lely Astronaut

MQC-C (type 3)	5.1004.2640.0
MQC-C (type 3)	5.1004.7470.0
MQC-C (type 3)	5.1005.1188.0
MQC-C (type 3)	5.1005.3659.0

Ref.	Part No	Qty.	Description	Techn. info	Criticality	Remark
1	5.1004.2889.0	1	Cell			
2	5.1004.7321.0	1	Magnet			
3	9.1183.0076.0	1	Sensor	Voltcraft DIN 41529		
4	9.1186.0794.0	1	Connector			







Lely Astronaut

MQC-C (type 3)

5.1004.2640.0

MQC-C (type 3)

5.1004.7470.0

MQC-C (type 3)

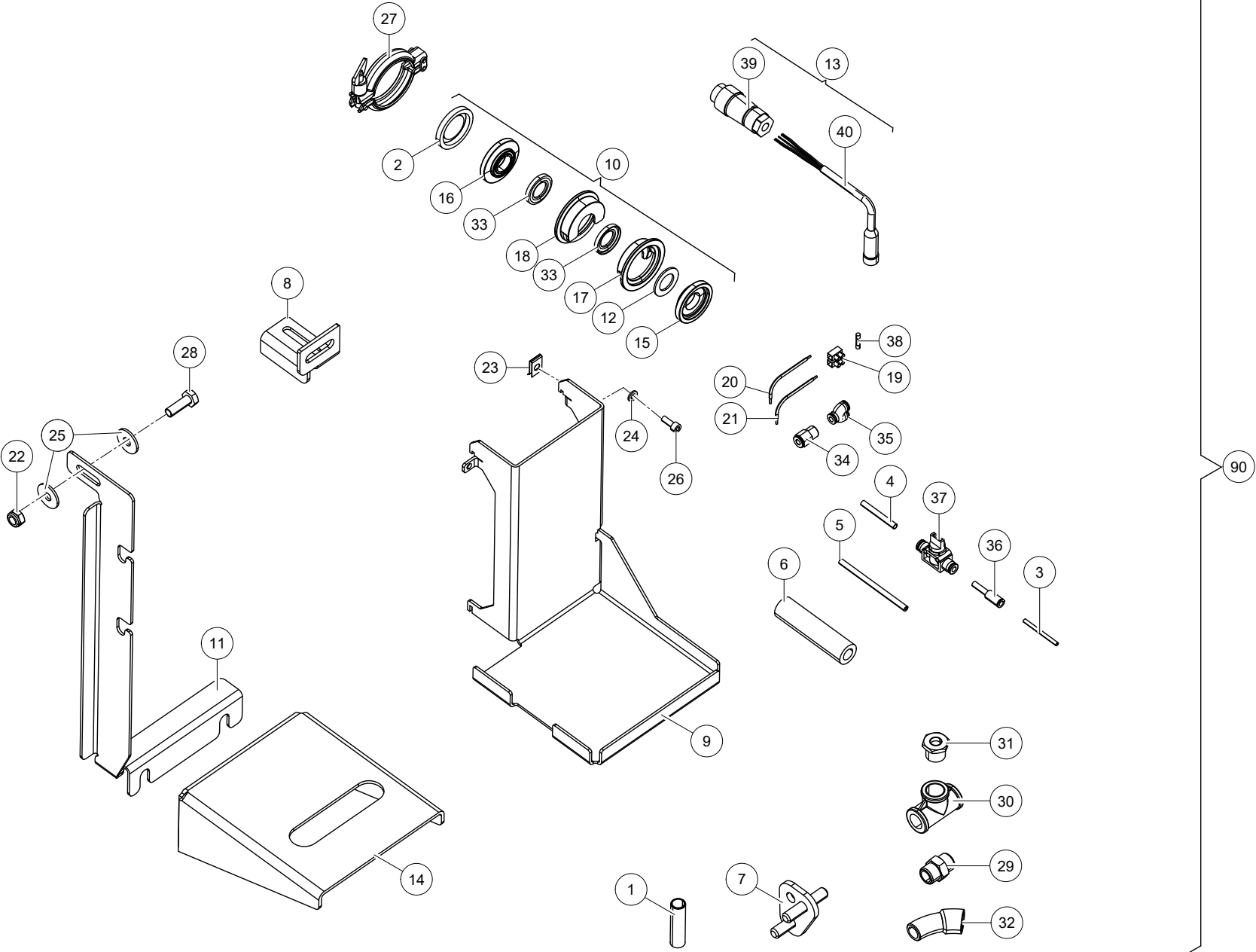
5.1005.1188.0

MQC-C (type 3)

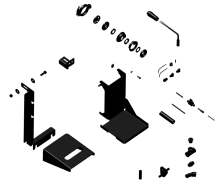
5.1005.3659.0

Ref.	Part No	Qty.	Description	Techn. info	Criticality	Remark
1	5.1004.5018.0	1	Pump			
2	5.1005.4108.0	1	Hose	L=210mm		
3	9.1189.0221.0	1	Cover			
4	9.1189.0225.0	1	Rotor			









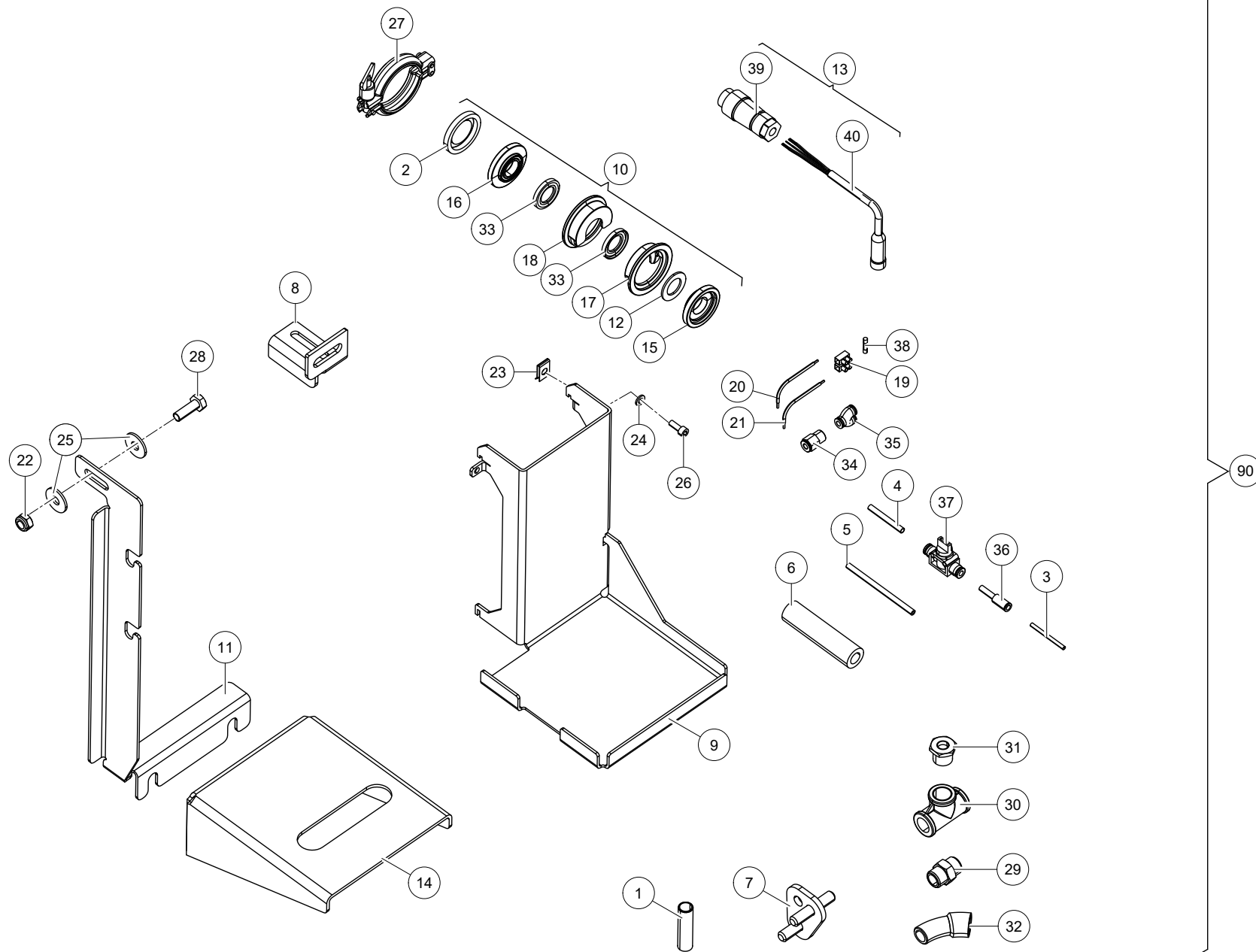
Lely Astronaut

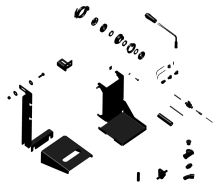
MQC-C (type 3)

5.1003.2480.0

Ref.	Part No	Qty.	Description	Techn. info	Criticality	Remark
1	5.1001.6659.0	4	Coupling piece			
2	5.1003.0752.0	1	Non-return valve			
3	9.1138.0075.2	1	Tube	OD 4mm		
4	9.1138.0064.5	1	Tube	OD 6mm		
5	9.1065.0112.0	1	Hose	MQC-C2 agent		
6	9.1185.0013.3	1	Hose	MQC-C2 drain and Milk tubes		
7	#####	2	Not separately			
8	#####	1	Not separately			
9	5.1003.2471.0	1	Bracket	FOR MQC-C2 CANISTER for A3		
10	5.1003.2474.0	1	Kit			
11	5.1003.2477.0	1	Bracket			
12	5.1003.2482.0	1	Gasket	milk pump to sampler valve		
13	5.1003.2486.0	1	Cable	MQC-C2 A3(N) CAN cable		
14	5.1003.2487.0	1	Bracket	Milkpump support		
15	5.1003.2494.0	1	Adapter	sampler to milk valves		
16	5.1003.2495.0	1	Adapter	Sampler to milk valves		
17	5.1003.2496.0	1	Coupling	for sampler valve - pump side		
18	5.1003.2497.0	1	Coupling	for sampler valve - milk valve side		
19	#####	1	Not separately			
20	#####	1	Not separately			
21	#####	1	Not separately			
22	9.1030.0022.6	1	Nut	M10 DIN985-A2-2 s/s		
23	9.1036.0039.3	1	Speed nut	M6 s/s		
24	9.1048.0090.0	2	Washer	A6.4 DIN125-A2 s/s		
25	9.1048.0104.0	2	Washer	A10.5 DIN9021-A2 s/s		
26	9.1057.0060.3	2	S.h. bolt	M6x16 DIN912-A2 s/s		
27	9.1066.0041.3	1	Tri clamp	2"		
28	9.1113.0321.4	1	Bolt	M10x30 DIN933-A2-2 s/s		
29	9.1129.0022.5	1	Doubler nipple	1/2" DIN2990		
30	9.1129.0023.6	1	T-piece	1/2" DIN2987		
31	9.1129.0029.5	1	Red. nipple	1/2"x1/4"		
32	9.1129.0201.0	1	Knee			
33	9.1130.0028.3	2	Tri clamp			
34	9.1138.0043.5	1	Plug-in coupling	1/4"x6mm (   )		
35	9.1138.0099.5	2	Plug-in coupling	6-6-6mm (Y)		
36	9.1138.0179.1	2	Adapter coupling	4-6mm		

CONTINUED

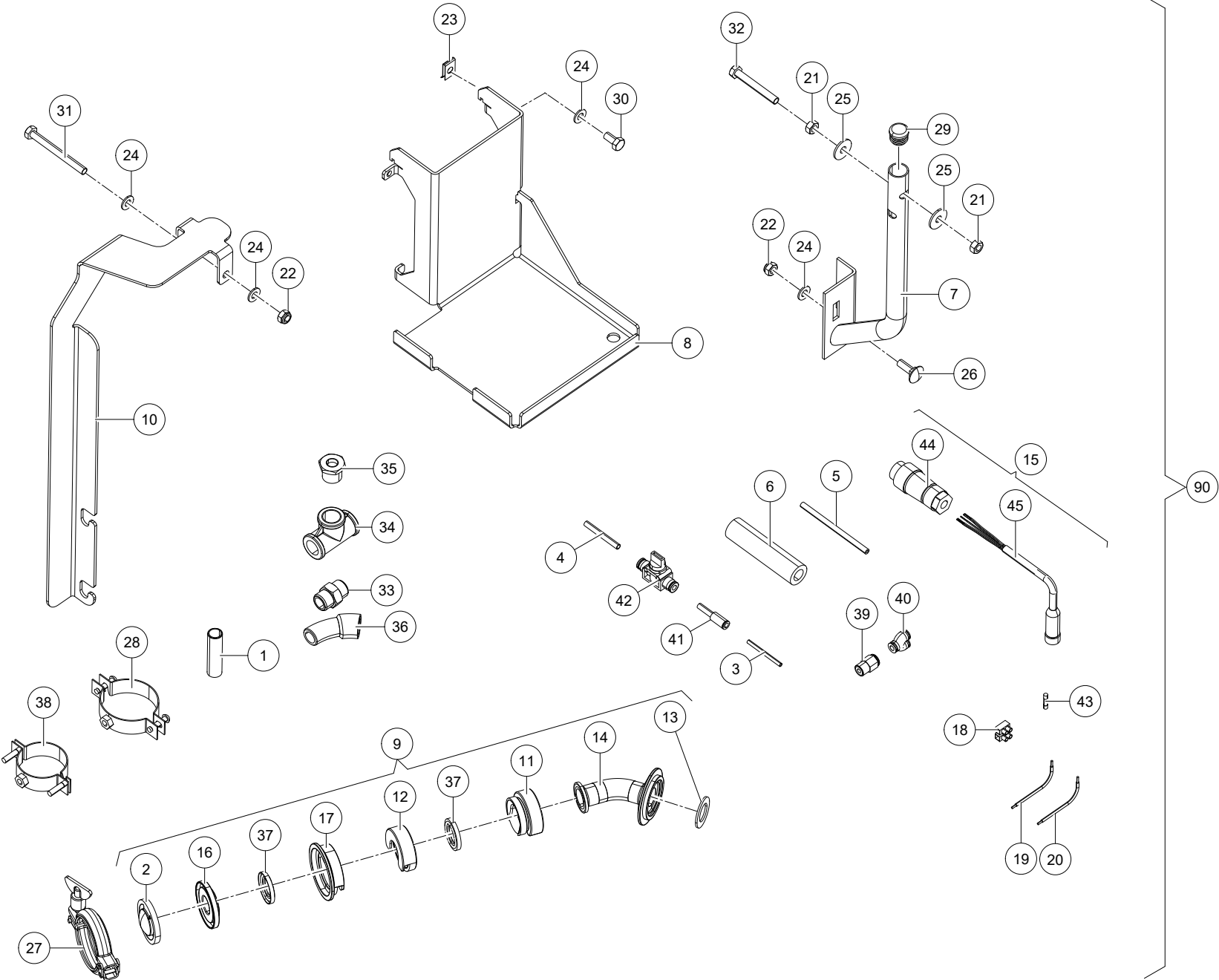




Lely Astronaut      MQC-C      5.1003.2480.0

Ref.	Part No	Qty.	Description	Techn. info	Criticality	Remark
37	9.1138.0399.0	2	Valve			
38	9.1186.0354.0	3	Fuse	5A		
39	9.1186.0442.4	1	Connector			
40	#####	1	Not separately			
90	5.1003.2480.0	1	MQC-C2 Mounting Kit	for A3		







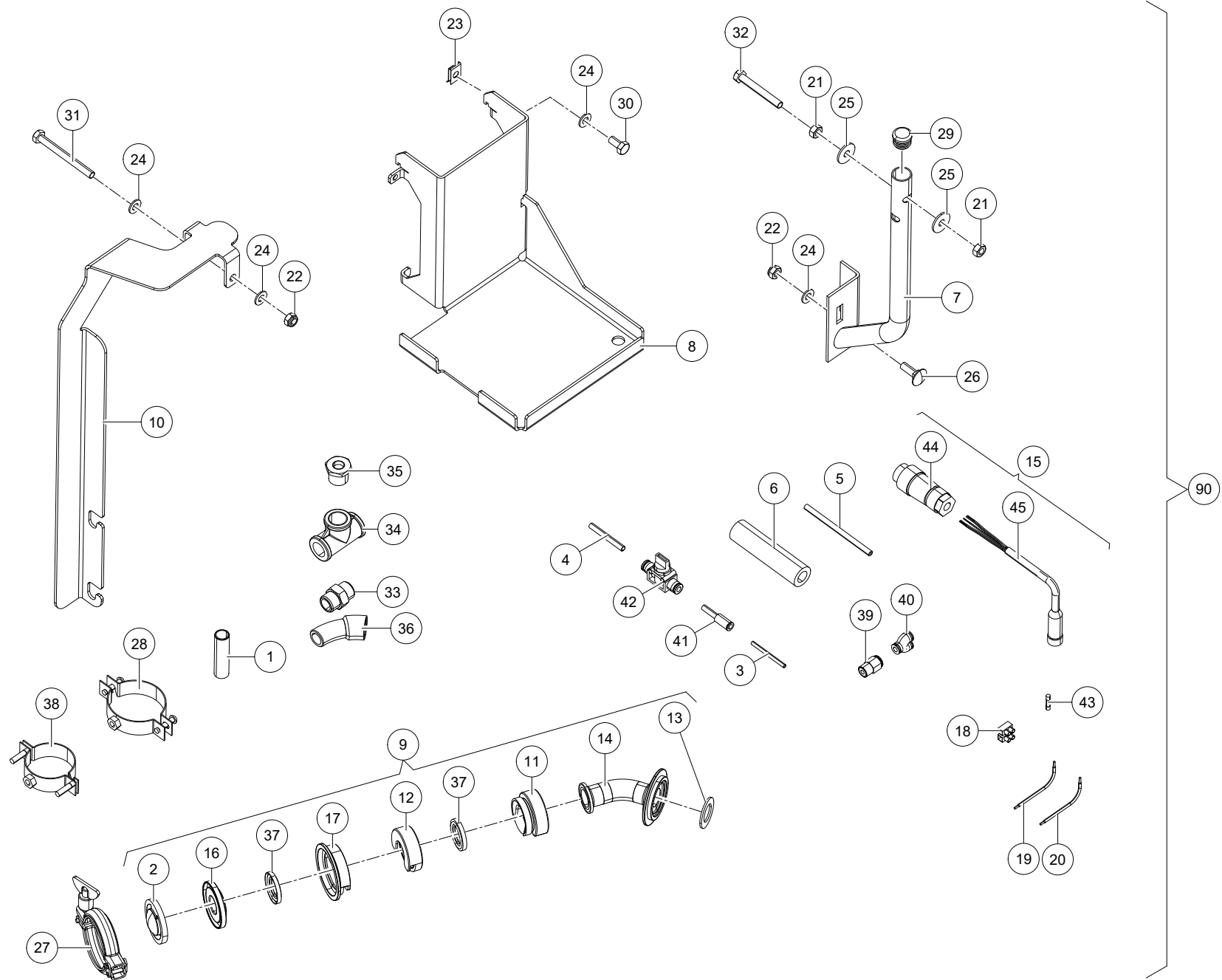
Lely Astronaut

MQC-C

5.1003.2490.0

Ref.	Part No	Qty.	Description	Techn. info	Criticality	Remark
1	5.1001.6659.0	4	Coupling piece			
2	5.1003.0752.0	1	Non-return valve			
3	9.1138.0075.2	1	Tube	OD 4mm		
4	5.1003.2412.0	1	Tube	OD 6mm		
5	9.1065.0112.0	1	Hose	MQC-C2 agent		
6	9.1185.0013.3	1	Hose	MQC-C2 drain and Milk tubes		
7	5.1003.2467.0	1	Support			
8	5.1003.2473.0	1	Bracket	MQC-C2 Canister support A3Next		
9	5.1003.2475.0	1	Kit			
10	5.1003.2476.0	1	Bracket	FOR PROCESSOR MQC-C2 A3Next		
11	5.1003.2478.0	1	Coupling	Sampler valve		
12	5.1003.2479.0	1	Coupling	Sampler valve		
13	5.1003.2482.0	1	Gasket	milk pump to sampler valve		
14	5.1003.2483.0	1	Adapter			
15	5.1003.2486.0	1	Cable	MQC-C2 A3(N) CAN cable		
16	5.1003.2495.0	1	Adapter	Sampler to milk valves		
17	5.1003.2497.0	1	Coupling	for sampler valve - milk valve side		
18	#####	1	Not separately			
19	#####	1	Not separately			
20	#####	1	Not separately			
21	9.1029.0029.0	4	Nut	M8 DIN934-A2-2 s/s		
22	9.1030.0020.4	2	Nut	M8 DIN985-A2-2 s/s		
23	9.1036.0039.3	2	Speed nut	M6 s/s		
24	9.1048.0050.2	5	Washer	A8.4 DIN125-A2 s/s		
25	9.1048.0052.4	4	Washer	A8.4 DIN9021-A2 s/s		
26	9.1058.0053.2	1	Coach bolt	M8x25 DIN603 s/s		
27	9.1066.0041.3	1	Tri clamp	2"		
28	9.1066.0098.0	2	Clamp	M8 62-64mm s/s		
29	9.1108.0133.5	1	Locking cap			
30	9.1113.0290.2	2	Bolt	M8x16 DIN933-A2-2 s/s		
31	9.1113.0347.2	1	Bolt	M8x80 DIN933-A2-2 s/s		
32	9.1113.0542.2	2	Bolt	M8x60 DIN933-A2 s/s		
33	9.1129.0022.5	1	Doubler nipple	1/2" DIN2990		
34	9.1129.0023.6	1	T-piece	1/2" DIN2987		
35	9.1129.0029.5	1	Red. nipple	1/2"x1/4"		
36	9.1129.0201.0	1	Knee			

CONTINUED





Lely Astronaut      MQC-C      5.1003.2490.0

Ref.	Part No	Qty.	Description	Techn. info	Criticality	Remark
37	9.1130.0028.3	2	Tri clamp			
38	9.1137.1012.0	2	Bracket			
39	9.1138.0043.5	1	Plug-in coupling	1/4"x6mm ( I )		
40	9.1138.0099.5	2	Plug-in coupling	6-6-6mm (Y)		
41	9.1138.0179.1	2	Adapter coupling	4-6mm		
42	9.1138.0399.0	2	Valve			
43	9.1186.0354.0	3	Fuse	5A		
44	9.1186.0442.4	1	Connector			
45	#####	1	Not separately			
90	5.1003.2490.0	1	MQC-C2 Mounting Kit	for A3Next		





INTENTIONALLY BLANK





**Lely Industries N.V.**

Cornelis van der Lelylaan 1

NL-3147 PB Maassluis

Tel +31 (0)88 - 12 28 221

Fax +31 (0)88 - 12 28 222

